



Privcap/ Game Change
Presents

REAL
ESTATE
2016

Private Capital,
Mega-Trends and the
Disrupted Future of a
Global Asset Class

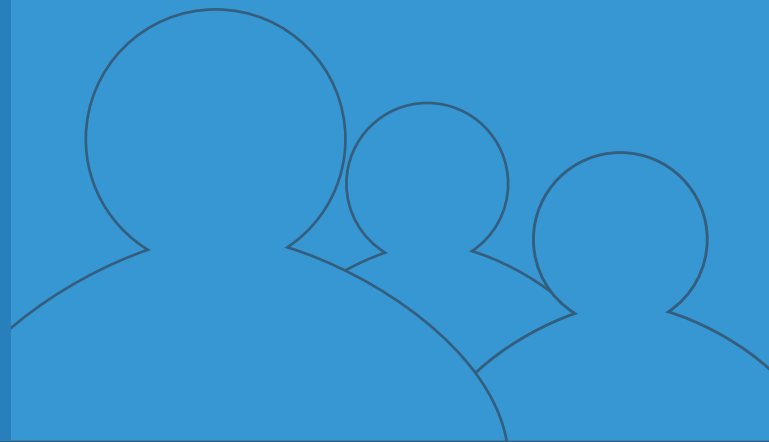
Nov. 2, 2016
Chicago, IL

Privcap is proud to present the **Game Change: Real Estate 2016** Conference in Chicago, IL on November 2, 2016

Real Estate Game Change 2016 is the premier event for institutional real estate investment, connecting leading fund managers and investors to discuss mega-trends, disruptions, and the future of the institutional real estate portfolio. Privcap Media will bring together authoritative experts to network and exchange intelligence about the evolving private real estate investment opportunity. Expert panelists will discuss cultural, economic, and technological trends that are profoundly changing the U.S. economy, multifamily investments, fundraising in real estate, the state of joint ventures, and more.

Who Should Attend?

- Institutional and family-office investors with allocations to real estate
- Private equity real estate, opportunity fund, and value-add managers
- Real estate asset managers and operating partners
- Intermediaries and service providers
- Investment advisors



Look Who's Coming

Here's just a sample of the firms you'll meet:

Aberdeen Asset Management

ACG - Middle Market Growth

ACORE Capital

AEW Capital Management

AFIAA U.S. Investment, Inc.

Aimbridge Hospitality

AJ Capital Partners

Akara Partners LLC

Alcion Ventures LP

Alpha Alternatives

American Realty Advisors

Arc Capital Partners

Argosy Capital

Artemis Real Estate Partners

Barings

Bayer Properties

Beacon Capital Partners, LLC

BH Management

BH Equities LLC

Bimarsan Properties, LLC

Blackbird Investment Group

Blue Vista Capital Management

BMO Capital Markets

Capital Brain

CBRE Capital Advisors, Inc.

Cheltenham Investments

CKG Advisors, LLC

Clarion Partners

Clark Street Real Estate

Colony Capital

Cornerstone Real Estate Advisers LLC

Crosswater Realty Advisors

Deutsche Bank

Equity Lifestyle Properties

Ernst & Young

Exelon Corporation

Forum Partners

Friedman Properties LTD

GEM Realty Capital, Inc.

GM Asset Management

Goodwin

Green Mesa Capital, LLC

Greenhill & Co., LLC

GreenOak

GTIS

Hatteras Funds

IRC Retail Centers

IronRock Investments

JCFOC

JMB Financial Advisors

Landmark partners

LEM Capital

Mack Real Estate Credit Strategies

Mainstreet

Matrix Capital Advisors LLC

Mayer Brown

Mesa West Capital

Monument Group

NAREIM

NAREIT

NEPC

NES Financial

New York Life Investors

Newcastle Limited

NorthStar Asset Management Group Inc.

PGIM Real Estate

PIMCO

Policemen's Annuity and

Benefit Fund of Chicago

Principal Real Estate Investors

Probitas Partners

Prologis

RealPage

Rialto Capital

Rockbridge Capital

RSM

Sage Realty Corporation

Singerman Real Estate

SOHO Realty Partners

Strategic Investment Group

T2 Capital Management

Tawani Enterprises Inc

TH Real Estate

The Carlyle Group

The Laramar Group

The Vortex Group, LLC

Tryperion Partners

UBS

University of Chicago

UPS Investments

Virtus Real Estate

Waterton

WeWork

WHI Real Estate Partners L.P.



Register now at www.regamechange.com.

Confirmed Speakers



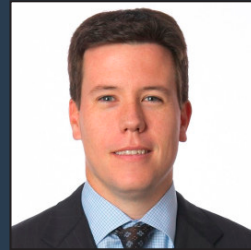
Featured



Caroline McBride
Co-Founder &
Chief Investment Officer,
Forum Partners



Paul Vosper
Executive Vice President,
PIMCO



James Sunday
Partner,
Landmark Partners



Larissa Herczeg
Managing Partner,
Oak Street Real
Estate Capital

Nathan Paine
Senior Vice President, Client Relations,
Prologis

Drew Ierardi
Senior Portfolio Manager,
Exelon Corp.

Denise Olsen
Senior Managing Director,
GEM Realty

Judy McMahan
Portfolio Manager, Real Assets,
UPS Investments

John Ferguson
Partner,
Goodwin

Gunnar Branson
President & CEO,
National Association of
Real Estate Investment Managers

Alan James
Senior Vice President,
RealPage

Tom Feldstein
Chief Operating Officer & General
Counsel,
GTIS

Adriana de Alcantara
Senior Director,
TIAA Global Asset Management

Peter Sotoloff
Managing Partner & Chief
Investment Officer,
Mack Real Estate Credit Strategies

Jeff Friedman
Co-founder,
Mesa West Capital

Dave McLaughlin
General Manager,
WeWork

Michael Schwartz
Consulting Lead,
RSM US

Tom Green
Partner, Assurance Lead,
Great Lakes Region Lead,
RSM US

Lara Forsman
Chief Financial Officer,
Chief Operating Officer,
Rockbridge Capital

Philip Barker
Senior Managing Director,
CBRE

Michael Yang
Research Consultant, Real Assets,
NEPC

Terrell Gates
Founder & CEO,
Virtus Real Estate

Neville Rhone
Co-Founder, Managing Partner,
Arc Capital Partners

Aoifinn Devitt
Chief Investment Officer,
Policemen's Annuity and
Benefit Fund of Chicago

David Rosenbaum
Managing Principal,
WHI Real Estate Partners

Chris Niehaus
Partner, Head of US Business,
GreenOak

Seth Singerman
President & Managing Principal,
Singerman Real Estate

Kevin Traenkle
Executive Director,
Chief Investment Officer,
Colony Capital

Doug Cornelius
Chief Compliance Officer,
Beacon Capital Partners, LLC

Ted Leary
Founder,
Crosswater Realty Advisors

Jon Gelb
Director,
Clarion Partners

William Bowman
Managing Director,
NorthStar Asset Management
Group Inc.

Michael Berman
Chief Financial Officer,
General Growth Properties

Daniel Roehl
SVP, Enterprise Sales,
Realpage

Lori Campana
Partner,
Monument Group

Neil Furmanski
Partner,
RSM US

Lindsey Simon
Founder,
Simon Compliance

Agenda

How To Register



Visit
www.regamechange.com



Call
(855) Privcap



7:30 - 8:40AM | *Invitation-Only LP Breakfast* **Real Estate for the Long Term**

Featured real estate performance experts discuss the drivers of returns in this important investment asset class.

7:30 - 8:40AM | *Invitation-Only CFO Breakfast*
An invitation-only, roundtable discussion among peers, looking at the key challenges facing chief financial officers and chief operating officers in real estate investment management firms today.

8:45 - 9:30AM | *Panel Discussion* **Shining a Light Into Real Estate's Cloudy Outlook**

Macroeconomic experts discuss and debate the factors that could impact real estate in the coming years.

9:35 - 10:00AM | *Keynote Interview*
Cycles: I've Seen a Few
A veteran of the RE market shares his or her insights into the current opportunity.

10:00 - 10:35AM | *Panel Discussion*
What the Private Market Can Learn From REITs
Market experts discuss volatility in the REIT market and what this has typically meant for the near-future of private real estate.

10:35 - 11:05AM | **Morning Networking Break**

11:20 - 12:25PM | *Morning Breakout Sessions*
Breakout Session A
Redefined Core Redefines the Exit Market

Breakout Session B
Will Sidelined CMBS Create a Funding Gap?

Breakout Session C
State of the RE Secondaries Market

12:30 - 1:40PM | **Lunch**

1:00 - 1:40PM | *Multi-Media Interactive Session*

Generational Smackdown: Millennials vs. Baby Boomers

A distinguished panel of expert GPs and real estate luminaries are presented with key facts about the Millennial and Baby Boomer generations.

2:05 - 3:10PM | *Afternoon Breakout Sessions*
Breakout Session A

GP Operations in the Age of SEC Compliance

Breakout Session B

Fundraising Disrupted: Foreign Capital and HNW Bundling

Breakout Session C

Deal Structuring – What Are Today's Top Deal breakers?

3:10 - 3:40PM | **Afternoon Networking Break**

3:45 - 4:20PM | *Panel Discussion*

Reengineering the Investor-Manager Relationship

As private equity and private real estate managers come under growing scrutiny over the way they structure—and are compensated—for doing business, Privcap asks how the industry is trying to better align LP and GP interests and whether the status quo can be sustained?

4:20 - 4:40PM | *Afternoon Keynote*

The Future of Retail Real Estate

A fascinating fireside chat with one of the biggest property investors in the World.

4:45 - 6:00PM | **Cocktail & Networking Reception**

In Partnership With

