



HITACHI
Inspire the Next

AUTOMATIC CLINICAL ANALYZER 50TH BRAND BOOK

BE BOLD.
ENVISION
THE FUTURE.

50 years have passed since Japan's first automatic analyzer for clinical testing was developed. Hitachi-High-Tech strives for the physical well-being of society.

Hitachi High-Tech Corporation

Toranomon Hills Business Tower, 1-17-1 Toranomon, Minato-ku, Tokyo 105-6409, Japan

Medical Systems Division

HTM-E032 | 2021.05
Printed by Japan(T)



Hitachi High-Tech Corporation



Our future begins with
this single step.



AUTOMATIC CLINICAL ANALYZER



Blazing new trails for 50 years,
alongside our partners.

In 1970, the time of Japanese economic miracle,
Hitachi High-Tech introduced the very first made-in-Japan
automatic clinical chemistry analyzer "Hitachi 400".
Today, half century has passed since we began supporting
our patients through our solutions.

We have ventured into an uncharted field ahead of anybody else.
We will continue to pave the way for
a better future of clinical laboratories and patients.

We will continue to explore further possibilities in
clinical testing all for the purpose of creating the future
we have always envisioned.

Slogan

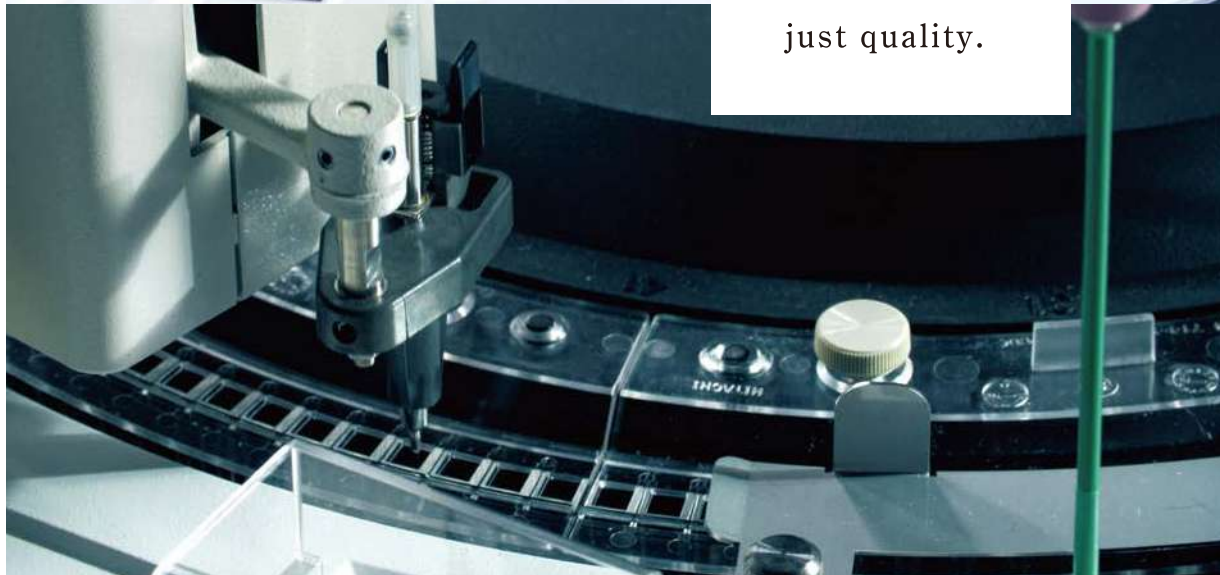
*BE BOLD.
ENVISION
THE FUTURE.*

Our goal is for a prosperous society in which everyone can lead their lives free from health concerns. This ultimate goal we strive for may sound too lofty.

Nonetheless, it shouldn't just be a fantasy. Our ideal future will be shaped through each and every action taken today.

Treading this path, we will certainly enhance the future of medical solutions.

With this vision in mind, making the best use of our knowledge and expertise, we are committed to taking every measure to always stay ahead of the curve.



We ensure more than just quality.

We engineers at Hitachi High-Tech ensure the quality of our products and services.



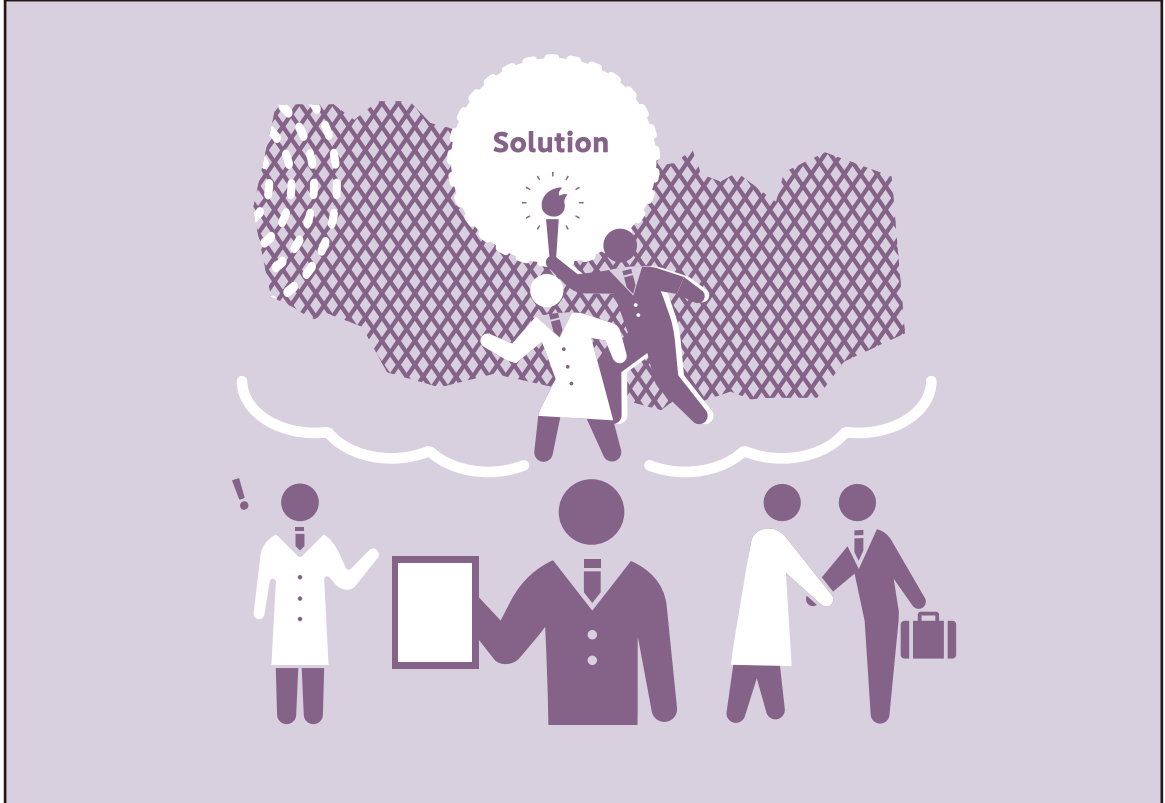
Our world-class quality goes beyond the specifications displayed in product brochures. We provide quality products and services to ensure complete customer satisfaction throughout their experience using our products. Without the individual commitment and passion of each engineer, Hitachi High-Tech's superior quality would not be possible. We engineers at Hitachi High-Tech ensure the quality of our products and services through our single-minded dedication, aiming at ever-higher standards. Our tireless endeavor solely for our customers has over time led to our worldwide reputation. With this confidence, we engineers will continue to enhance the quality of our products and services and maintain strong relationships with our customers.



Evolving solutions,
enhancing
customer values.



We are committed to providing
our customers with the best solutions.



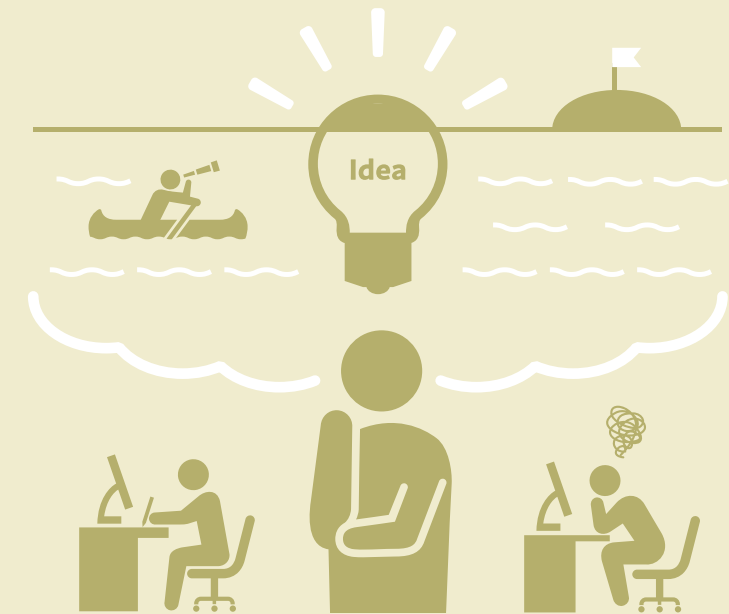
What we offer is more than just a single device. Instead, we implement effective solutions to create new values for our customers. Making full use of our imagination, we are committed to providing our customers with the best solutions in the hope that our dedication to the medical field will pave the way toward our ideal society where everyone can live out their full lives. We continue to enhance customer values, working toward a better future by improving our customers' workflow and maximizing their benefits through our products and solutions.



Surpassing limits,
realizing our dreams.



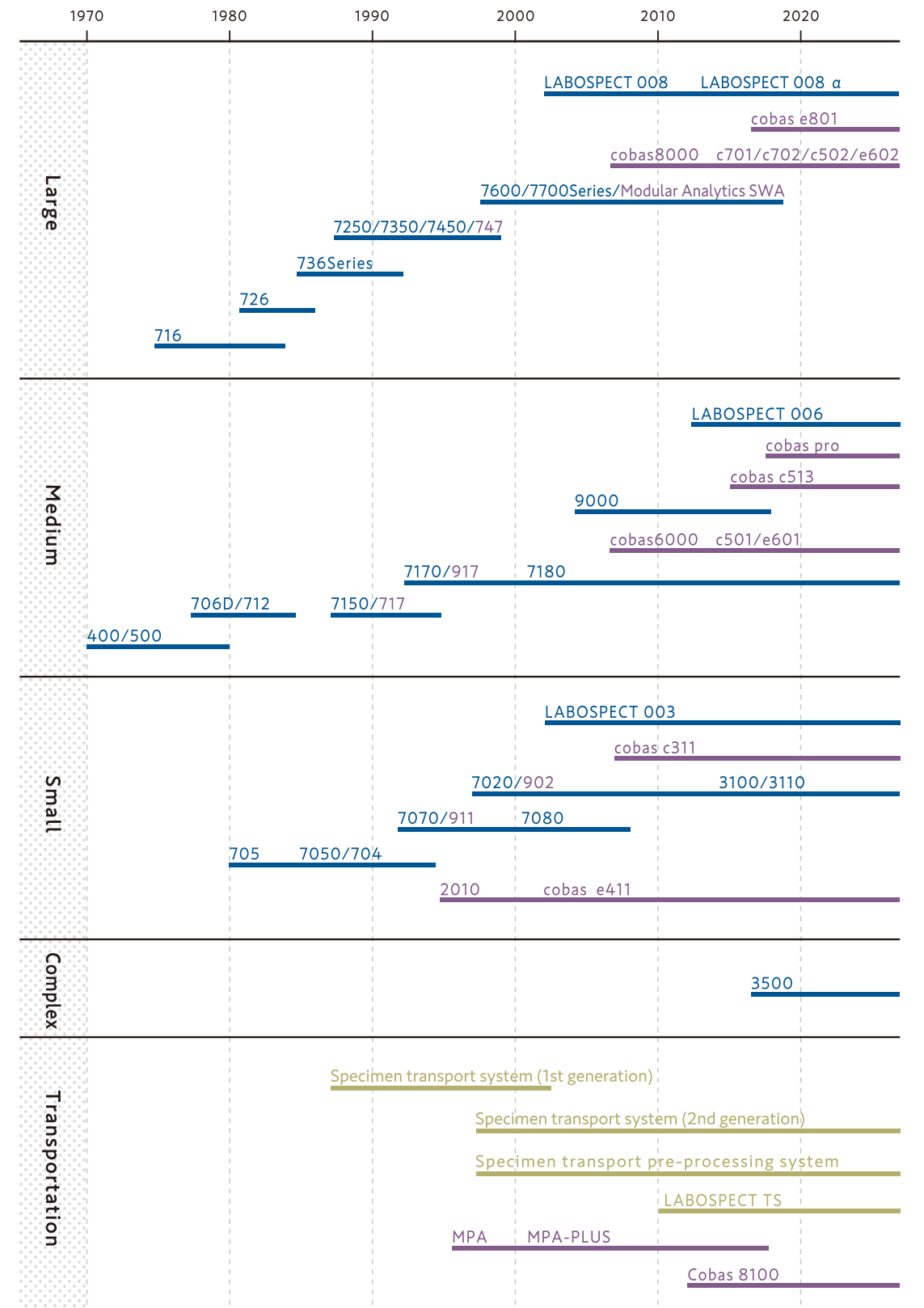
The word “impossible” is not in our
development philosophy.



An unrealistic idea that engineers had once envisioned will
become the standard in years to come.
With this belief, every engineer at Hitachi High-Tech
takes the initiative in making their ideas reality, rather than
leaving the development to others.
As our customers at the forefront of the medical field have
been experiencing rapid changes, we can't afford to sit
around wasting time. We take action now and surpass the
limits, dedicating ourselves to realizing our dreams.
The word “impossible” is not in our development philosophy.



History Clinical Analyzers / Laboratory Automation Systems



For clinical laboratories worldwide,
we must focus on what we can do now.

50 years have passed since Hitachi High-Tech introduced the very first made-in-Japan automatic clinical chemistry analyzer to the market. Since then, medical technology has dramatically advanced including clinical instruments which support to provide accurate diagnosis to our patients.

Enabling to provide more results in shorter period of time.
Enabling to detect diseases which was once impossible.

However, our journey never ends. Clinical instruments have infinite possibilities and this is why we at Hitachi High-Tech eagerly continue to walk together with our customers towards the future which brings more happiness to our patients.